

Dear Partners,  
Welcome to Italy and to Turin!  
Erasmus+ project **DIGITAL INCLUSION** 2020-1-ES01-KA201-082122

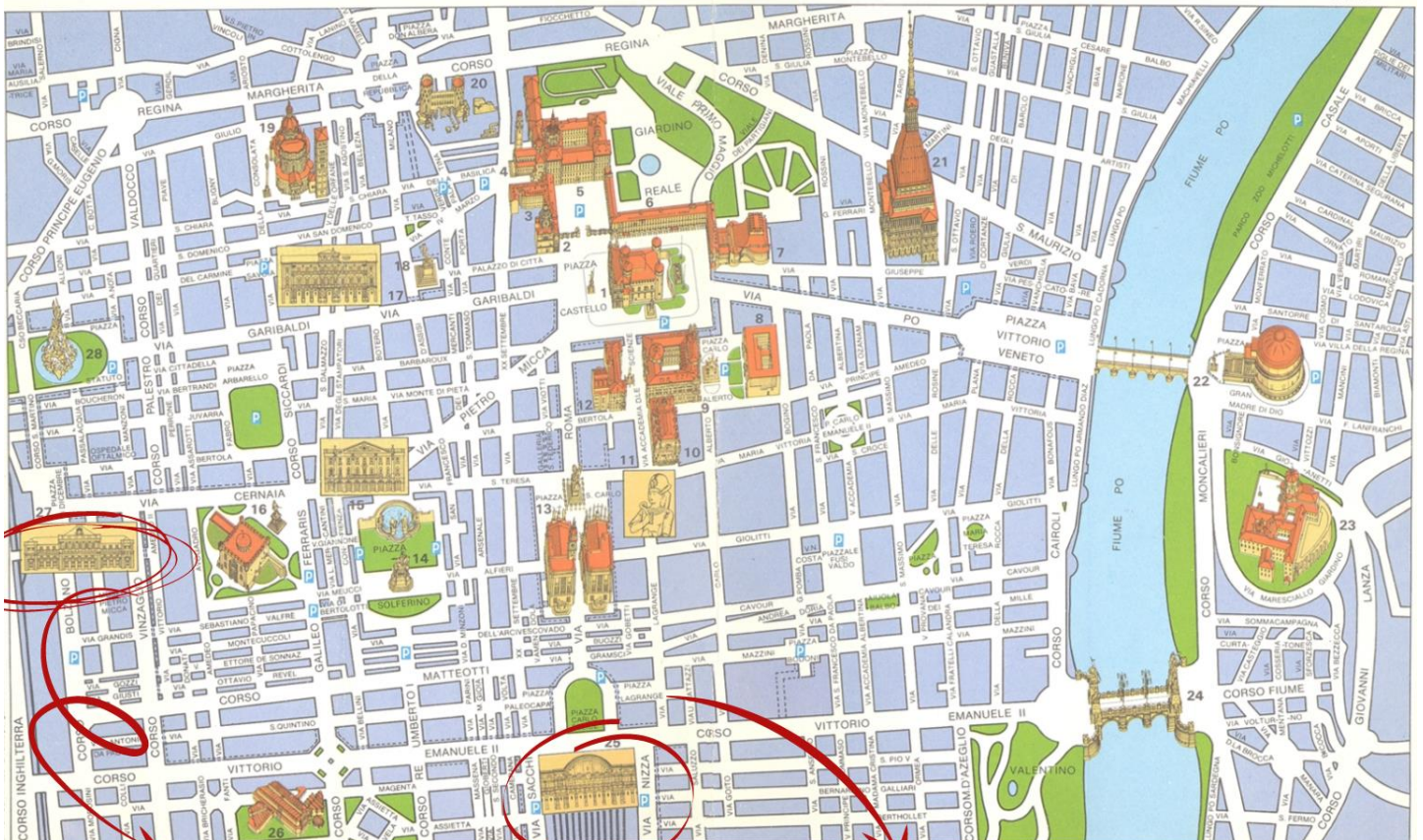
Turin airport: **TORINO CASELLE**  
Turin train and subway stations closest to the city center are **PORTA SUSA** and **PORTA NUOVA**.

Timetable of the bus from Turin airport to the city center:  
<https://torino.arrriva.it/en/airport-line-torino-city-center-torino-airport/>

Recommended hotels:  
In **Torino** - **CONCORD HOTEL** <https://www.hotelconcordtorino.com/en/>  
Via Lagrange, 47 – 10123 Torino (TO)

In **Pianezza** – **GALLIA HOTEL** <https://www.galliahotel.it/>  
Via Torino, 29 – 10044 Pianezza (TO)

## TORINO CITY CENTER



**PORTA SUSA**  
TRAIN AND SUBWAY STATION

**PORTA NUOVA**  
TRAIN AND SUBWAY STATION

**HOTEL CONCORD**  
Via Lagrange 47



## PROGRAM OF OUR DAYS TOGETHER

<b>Thursday, 28th April 2022</b>		
Arrival day		

<b>Friday, 29th April 2022</b>		
09:30 – 10:00	Official welcome and opening of the meeting	Istituto dei Sordi and Teresa Miquel i Pàmies School
10:00 – 11:30	Project management issues	Teresa Miquel i Pàmies School
11:30 – 13:00	Reflection on the project and evaluation of the project results achieved so far <ul style="list-style-type: none"><li>- Database</li><li>- Photo manifesto</li><li>- Action plans</li></ul> Reflection on the website	All partners  Open Europe
<b>Lunch – ASTEMI Restaurant in Pianezza</b>		
14:00 – 15:30	Quality management  Evaluation and Impact  Dissemination activities	Leonardo da Vinci First Private School  SOU Gimnazija Koco Racin  Istituto dei Sordi
15:30 – 16:00	Next steps  Certificates	Teresa Miquel i Pàmies School Open Europe  Istituto dei Sordi

<b>Saturday, 30th April 2022</b>		
Departure day		



ISTITUTO DEI SORDI DI TORINO

Fondazione Onlus

Viale San Pancrazio 65 – 10044 Pianezza (TO)

[www.istitutosorditorino.org](http://www.istitutosorditorino.org)



The Turin Institute for the Deaf in Pianezza (Torino) is an organization with ancient origins, founded in 1814 in order to take care of the education of deaf children and to train their teachers. The Institute is a non-profit Foundation.

## SERVICES

- Special need teachers and educators service in mainstream schools (from kindergarten to university) supporting students in collaboration with the local social services and school authorities;
- Training program for multi-impaired deaf and deafblind people and students with different disabilities;
- Vocational training and vocational guidance for young deaf (cooking and gardening);
- Training for teachers, speech therapists and educators;
- Specialized library and documentation centre for teachers and parents;
- Special projects for the inclusion of deaf people in the society in the view of universal accessibility, with a focus on museum and cultural institutions;
- Projects with the Universities in the fields of researches, language rehabilitation and social services;
- Home housing for deaf adults;
- European projects;
- Speech therapy and SLI programs;
- Kindergarten (with national ID as formal school);
- Language classes: Italian, English, sign languages;
- Sensorial Garden.

Viale San Pancrazio n. 65 PIANEZZA (TO)

Tel: +39 011 9676317

## SOCIAL

**FACEBOOK:** Istituto dei Sordi di Torino

**TWITTER:** @IstitutoSordi

**LINKEDIN:** Fondazione Istituto dei Sordi di Torino

**ANOBII:** Biblioteca dell'Istituto dei Sordi

**INSTAGRAM:** istitutodeisordiditorino

**YOUTUBE:** Canale di IstitutoSordiTorino



## HOW TO MOVE FROM THE INSTITUTE TO TORINO CITY CENTRE (AND VICEVERSA) IN AUTONOMY

Due to COVID-19, it's compulsory to travel on public transport with a FFP2 mask and with "super green pass" (obtain after vaccination).

**From Torino to Pianezza:** take the subway direction FERMI and from there take bus CP1 till the stop that is more convenient for you (could be MARCO POLO and then 5 minutes walk or MUSINE and 1 minute walk)

Or you can take bus number 32 from Corso Tassoni in Turin, direction Alpignano till stop SAN PANCRAZIO and then 5 minutes walking.

**From Pianezza to Torino:** take bus number CP1 till subway (metro) FERMI and from there take subway till the stop that is more convenient to you.



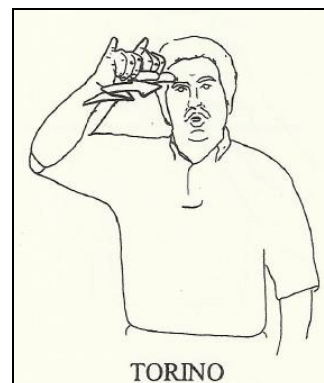
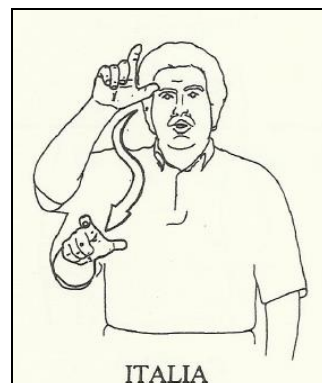
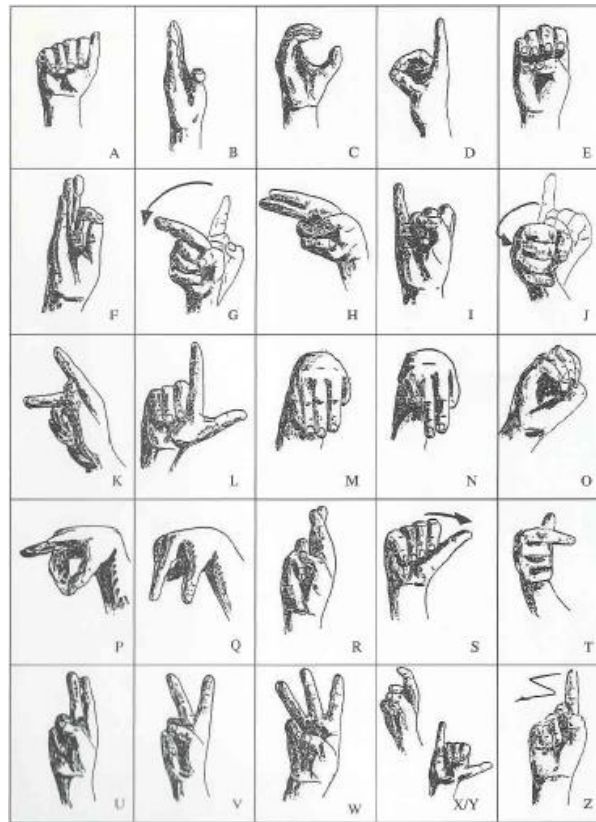
Metropolitana di Torino • Linea 1	
P	Fermi
	Paradiso
P	Marche
	Massaua
	Pozzo Strada
	Monte Grappa
	Rivoli
	Racconigi
	Bernini
	Principi d'Acaja
	XVIII Dicembre
	Porta Susa
	Vinzaglio
	Re Umberto
P	Porta Nuova
	Marconi
	Nizza
	Dante
P	Carducci-Molinette
	Spezia
P	Lingotto



### A LITTLE BIT OF ITALIAN...

English	Italiano
Hello	Ciao
Good morning	Buon giorno
Good afternoon	Buon pomeriggio
Good evening/night	Buona sera
How are you? I'm fine.	Come stai? Sto bene.
Goodbye	Arrivederci
Thank you	Grazie
Excuse me	Mi scusi
Where is...?	Dove si trova...?
Street	Strada/Via
Where's the toilet?	Dov'è il bagno?
Help!	Aiuto!
I'd like a coffee.	Vorrei un caffè.
I'd like to have lunch/dinner here.	Vorrei mangiare qui.
Bon appétit!	Buon appetito
The check, please.	Il conto, per favore.
How much?	Quanto costa?
My name is...	Mi chiamo...
I come from Finland/Romania/Netherlands/ Poland/Northern Ireland.	Vengo dalla Finlandia/Romania/Olanda/ Polonia/Irlanda del Nord.
What do you do?	Studi o lavori?
I'm a teacher.	Sono un insegnante/una insegnante.
I'd like a ticket for the museum.	Vorrei un biglietto per il museo.
I'd like to have lunch/dinner here.	Vorrei mangiare pranzo/cena qui.

...AND A LITTLE BIT OF ITALIAN FINGERSPELLING!





## MUST-TRY PRODUCTS IN TURIN

Turin is well known for chocolate, in fact Italian chocolate tradition born here: already in the XVII century where produced 350 pounds of chocolate a day, partly for local consumption, in part for export all over Europe. In the '600 and in the '700 the ritual of hot chocolate was in vogue at court and in the houses of the nobility, but it is from 800 that "cicôlaté" (master chocolatiers) created endless variety of chocolates, creme de cacao, chocolate cakes.

One of the most popular chocolates in Piedmont is *Gianduiotto*. Usually they are enveloped in paper gold or silver.



The *Bicerin* (literally little glass) is a historic hot drink and non-alcoholic typical of Turin, this drink is served in large round glasses, consisting of a mixture of coffee, chocolate and cream sweetened with syrup.

## SOME TRAVEL TIPS

### MOLE ANTONELLIANA and NATIONAL CINEMA MUSEUM

It is a major landmark building in Turin. Its name comes from the architect who built it, Alessandro Antonelli. *Mole* means a building of monumental proportions. Its construction began in 1863, soon after Italian unification, and was completed in 1889, after the architect's death. Originally conceived of as a synagogue, it now houses the Museo Nazionale del Cinema, and is the tallest museum in the world. You can reach the top with an amazing panoramic lift.



### EGYPTIAN MUSEUM

The Egyptian Museum of Turin is considered the most important in the world for the value of the findings after the Cairo's one. The Egyptian Museum is in Via Accademia delle Scienze 6.

### THE AUTOMOBILE MUSEUM

As Italy, and Turin in particular because of FIAT group, has a great history in the manufacture of cars, it may be interesting to visit the Automobile Museum. It is situated in Corso Unità d'Italia, 40.

### GAM (GALLERY OF MODERN ART)

Permanent collections of modern and contemporary paintings and sculptures. You can find also some installations and videos. Via Magenta, 31.

### MUSEO LAVAZZA

The museum with the history of the worldwide famous Turin-based coffee brand <https://museo.lavazza.com/en.html>

## RESIDENCES OF SAVOY

By the name of *Residenze Sabaude* is intended to indicate lots of building property of the royal family of Savoy. This UNESCO sites are not only in Turin, but in many cities and towns all over the Piedmont. Just some of the many to visit:

- 1) Palazzo Madama (with inside the the Civic Museum of Ancient Art) and Polo Reale (Royal Place collections and musems) are the heart of the city, seated in Castle Square (Piazza Castello)
- 2) Palazzo Carignano (seat of the first italian Parliament)
- 3) Reggia di Venaria Reale
- 4) Basilica di Superga (where the tombs of the Savoy Royal family are)
- 5) Hunting Palace of Stupinigi



Restaurants nearby the hotel and in the city center you can try:

1. SICOMORO - Via Stampatori, 6
2. Antica Bruschettaeria PAUTASSO - Piazza Emanuele Filiberto, 6
3. PORTO DI SAVONA - Piazza Vittorio Veneto, 2
4. EATALY - Via Lagrange, 3
5. RISTORANTE SOLFERINO – Piazza Solferino, 3
6. RISTORANTE MARECHIARO - Via San Francesco d'Assisi, 21

All these restaurants are specialized in Italian cuisine and Pautasso in local ripedmontese cuisine. In particular SICOMORO and MARECHIARO are really good in cooking pizza.

In some menus you can find these typical Piedmont's dishes:

- Agnolotti (fresh pasta usually filled with meat)



- Carne cruda (raw meat, served as starter)



- Tagliolini or tagliatelle (fresh pasta with various sauces)



- Fassone meat



- Risotto al vino rosso (rice cooked with red wine)



- Bagna cauda (anchovy sauce served with vegetables)



- Polenta (boiled cornmeal served with meat or sausage or cheese...)



- Bonet (typical dessert from Piedmont, it is made with amaretti, cocoa, eggs, milk and flavored with rum)

